

Practical model for improved classification of trace chemical residues on surfaces in active spectroscopic measurements

Cara P. Murphy,^{a,b,*} John Kerekes,^b Derek Wood,^c and Anish Goyal^c

^aSystems and Technology Research, Woburn, Massachusetts, United States

^bRochester Institute of Technology, Chester F. Carlson Center for Imaging Science,
Rochester, New York, United States

^cBlock MEMS, Southborough, Massachusetts, United States

Abstract. Trace chemical detection and classification in stand-off reflection-based spectroscopic data is challenging due to the variability of measured data and the lack of physics-based models that can accurately predict spectra. Most available models assume that the chemical takes the form of spherical particles or uniform thin films. A more realistic chemical presentation that could be encountered is that of a nonuniform chemical film that is deposited after evaporation of the solvent that contained the chemical. We present an improved signature model for this type of solid film. The proposed model, called sparse transfer matrix, includes a log-normal distribution of film thicknesses and is found to reduce the root mean square error between simulated and measured data by about 25% when compared with either the particle or uniform thin film models. When applied to measured data, the sparse transfer matrix model provides a 10% to 28% increase in classification accuracy over traditional models. © The Authors. Published by SPIE under a Creative Commons Attribution 4.0 Unported License. Distribution or reproduction of this work in whole or in part requires full attribution of the original publication, including its DOI. [DOI: [10.1117/1.OE.59.9.092012](https://doi.org/10.1117/1.OE.59.9.092012)]

Keywords: active spectroscopy; chemical detection; signature modeling.

Paper 20200215SS received Feb. 25, 2020; accepted for publication Jul. 24, 2020; published online Sep. 7, 2020.

1 Introduction

Detection of trace amounts of chemicals on surfaces is a desirable capability for a wide range of applications such as forensics, defense, border protection and monitoring, and other applications throughout the law enforcement and intelligence communities.¹ Chemicals of interest for these applications include explosives, chemical warfare agents, narcotics, etc. Midinfrared (MIR) spectroscopy is intrinsically capable of detecting such chemicals with both high sensitivity and high specificity.² Active spectroscopy is arguably the only technique capable of achieving high-sensitivity standoff detection of trace chemicals on surfaces while achieving high areal coverage rates.^{3,4} A notional example of an active MIR hyperspectral imaging (HSI) system is shown in Fig. 1. The system operates by measuring the spectral reflectance of the target surface in the MIR portion of the optical spectrum. The illumination source is typically a quantum cascade laser (QCL).^{3,5,6} The measured signature is compared to a spectral library of reference signatures. Because of the wide range of relevant applications for this type of technology, the spectral library often includes hundreds to thousands of reference chemicals, making the association of measured data with the reference data very challenging.

The detection and classification performance of such a system is limited by the availability of relevant datasets for properly training the detection algorithms. Because it is often not possible to measure all combinations of chemicals, chemical presentations (i.e., deposition method), and substrates, it is important to be able to generate spectral libraries from physics-based signature models.⁷ However, developing a signature model for trace chemical detection applications is challenging due to the phenomenological complexities. Representative models must account for multiple types of scattering with dependencies on the chemical, surface, and geometric

*Address all correspondence to Cara P. Murphy, E-mail: cara.murphy@stresearch.com

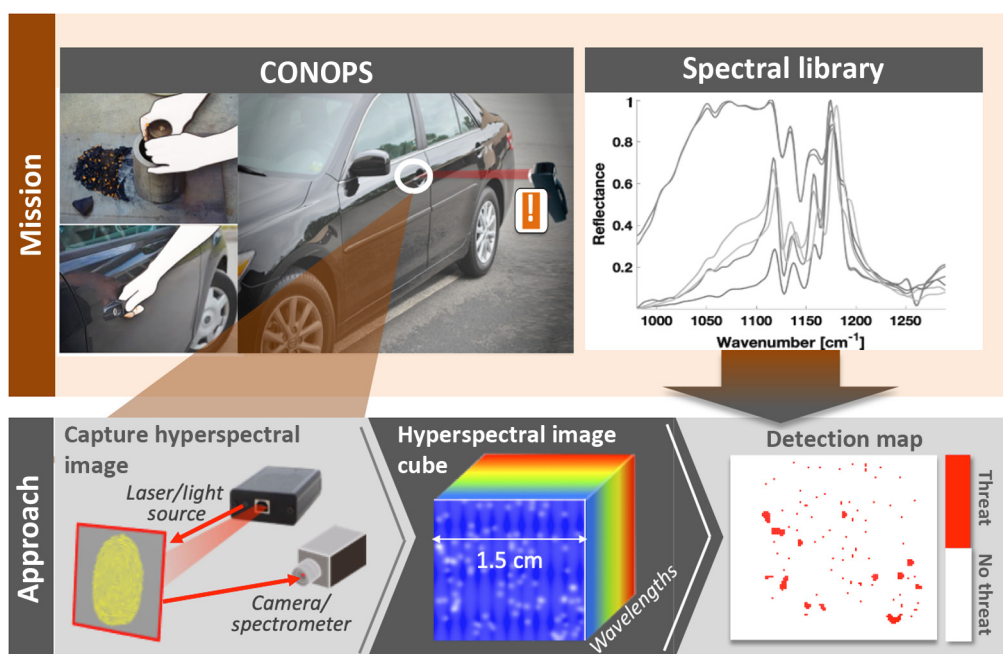


Fig. 1 Notional depiction of stand-off trace chemical detection via an active spectroscopic instrument. The reference signature library is pertinent to the system's ability to detect chemicals of interest.

properties, including particle size and distribution, surface roughness and dielectric properties, illumination angle, etc.^{8,9} Furthermore, due to the high variability of chemical and surface properties in real-world data, the signature model parameters must be carefully selected.¹⁰

Of particular interest to the research presented in this paper is the development and testing of a signature model designed specifically for modeling a trace chemical residue. Here, trace chemical residue is defined as the film-like residue that remains on a surface after the evaporation of a solvent that contained the chemical. Previous models that have been developed for trace chemical particles (e.g. Mie scattering)¹¹⁻¹³ and uniform thin liquid films (e.g. the transfer matrix – TM – model),¹⁴⁻¹⁸ do not sufficiently capture the case of the film-like residue. Specifically, we have found that chemical residues do not present themselves as uniform films, as shown in the photomicrographs of two chemical residue samples on glass in Fig. 2. This paper proposes a modification to the well-known TM model to specifically handle the physics of trace chemical residue. We call this modified model sparse transfer matrix (STM). STM assumes a nonuniform film with thickness sampled from a log-normal distribution, as opposed to the standard TM model, which assumes uniform film thickness. Note that STM includes a uniform thin film as a special case.

This paper is structured as follows. Section 2 gives a brief overview of previous research in the area of active spectroscopic phenomenology of chemicals. Specifically, we cover the

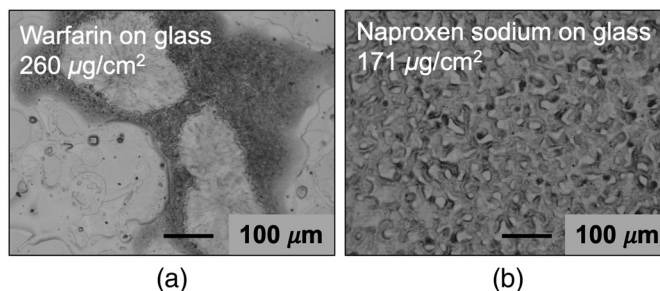


Fig. 2 Photomicrographs of chemical residues on glass: (a) warfarin and (b) naproxen sodium. Both samples show nonuniform distributions of film thickness across the contamination area.

state-of-the-art in extracting optical constants that are required inputs to any chemical signature model followed by a summary of physical, chemical, surface, and geometric properties that have been found to cause spectral signature variability. We finish this section by defining two related physics-based models for the application at hand. The proposed model for this research is described in Sec. 3. The descriptions of real and synthetic data used in this research can be found in Sec. 4.1. Section 4.2 compares the overall fit of the various signature models with measured data. The results on the classification performance improvement on real data are presented in Sec. 4.3.

2 Background

The derivation of physics-based signature models used for active spectroscopy requires not only an understanding of the underlying physics, but also information on the various physical properties. We define the models presented in this paper as being “physics-based” to make the distinction between physical models and machine/deep learning models, which have also been applied to chemical reflectance modeling.⁷ The physical models that are typically used in stand-off active spectroscopy applications combine theoretical physics with empirical measurements or assumptions as some if not many of the physical properties are not known for a given measurement.¹⁹ In the next few subsections, we discuss some of the physical properties and empirical data that we use to estimate and predict chemical reflectance. One of the most crucial inputs to a physics-based model is the wavenumber-dependent complex optical constants that are unique to each chemical.²⁰ There exists much research in the literature on extracting chemical optical constants of chemicals, in either liquid or solid phase, as well as signature models for calculating the reflection spectrum from contaminated surfaces. Although this area of developing active spectroscopic signature models has been explored for quite some time, we consider two of the most widely-accepted models in this paper: one for solid particles on a surface and one for uniform thin liquid films on a surface.¹⁹

2.1 Estimating Optical Constants

It is well known that the underlying spectral features (absorption peaks in active spectroscopy) of both the chemical and surface derive from their complex optical constants.²⁰ While the determination of optical constants for liquids is relatively straightforward, their determination for solids is much more complicated. One of the more widely accepted approaches is to use single-angle reflectance spectroscopy followed by Kramers-Kronig transformation for estimating optical constants (\tilde{n}) for crystalline solids.^{21–24} For solid minerals, DeVetter et al. have shown that using carefully designed mask apertures with low reflectance is more optimal for solid minerals.²⁵ The optical constants used in this research were measured and provided by Pacific Northwest National Laboratory (PNNL) through IARPA’s (Intelligence Advanced Research Projects Activity) SILMARILS (Standoff ILLuminator for Measuring Absorbance and Reflectance Infrared Light Signatures) program.

2.2 Trace Chemical Phenomenology

In measured data, estimating trace chemical reflectance is not as simple as calculating the reflectance of a solid chemical at the chemical/air boundary.²⁶ Instead, it varies greatly with a number of factors. Some of the more significant parameters are particle size²⁷ and shape for solids²⁸ or film thickness in the case of liquids,^{29,30} sample morphology,³¹ surface roughness,³² and sampling angle (i.e. bidirectional reflectance function – BRDF).^{9,33} In addition to these factors, reflectance spectra may also vary with chemical thermodynamic state,³⁴ molecular interactions,³⁵ and humidity.^{36,37} Figure 3 demonstrates the expected variability of normalized reflectance for trace chemical films on surfaces. The curves show measurements for six identical samples (saccharin films on glass) collected by the same sensor at two slightly different measurement angles. There is high variability in the overall spectral shape and the depth of spectral features due to the differences in measurement geometry.

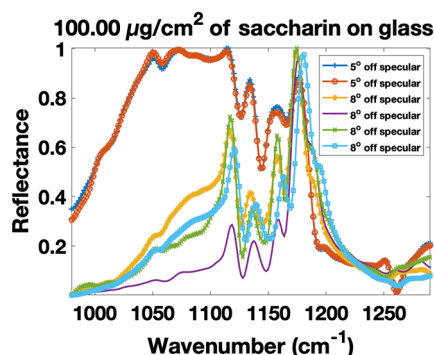


Fig. 3 Normalized reflectance measurements of six identical samples (saccharin film on glass at a concentration of $100 \mu\text{g}/\text{cm}^2$) collected with the same sensor at two measurement angles, demonstrating the high variability of trace chemicals. Note the variability in not only overall spectral shape, but also the depth of the distinct spectral features.

2.3 Existing Signature Models

The implementations of the Mie scattering particle model and TM uniform thin film model considered in this paper are defined by Myers et al.¹⁹ For the reader's convenience, these models are summarized in the next two sections.

2.3.1 Mie scattering models for particles

Mie scattering describes light scattering from an isolated spherical particle of known complex optical constant and diameter. In addition, it is often used to approximately describe the scattering of light from particles on a surface, which is schematically depicted in Fig. 4(a). For the case of particles on a surface, the effect of the substrate has a significant impact on the reflectance spectrum. The Mie scattering-based model accounts for multiple types of scattering – backscattering from the particle back to the sensor at varying angles depending on the particle shape and sensing geometry (e.g., angle) and forward scattering from the particle to the substrate (i.e., surface) first and back toward the sensor second [see Fig. 4(a)]. Finally, there is reflectance of the bare substrate itself in regions that are not covered in particles. The fraction of a pixel covered by particles is known as the fill factor. The fill factor (FF) depends on the chemical mass loading (i.e., concentration), m ($\mu\text{g}/\text{cm}^2$), chemical density, ρ ($\mu\text{g}/\text{cm}^3$), particle diameter mean, μ (cm), and standard deviation, σ (cm), as

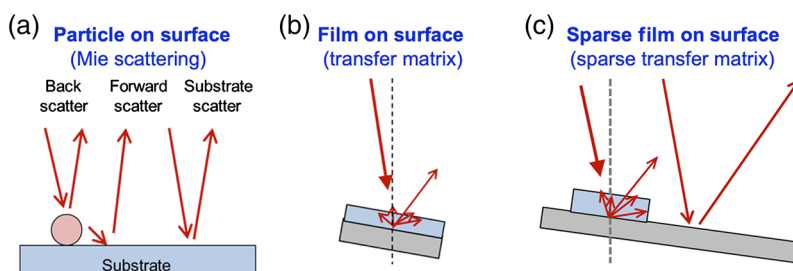


Fig. 4 (a) A diagram of the types of scattering captured by the Mie scattering particle model. Backscatter interacts with the particle and reflects back toward the sensor while forward scatter reflects off the particle, onto the substrate, and back toward the sensor. Areas without particles will only show substrate reflectance. (b) The TM method models the light refraction as it travels through and back out of the liquid film on the substrate, as well as scattering within the film as the light interacts with the substrate itself. (c) The STM model includes films of nonuniform thickness sparsely covering the pixels. The film contributions are calculated using the TM method. The reflectance is a linear combination of film and substrate reflectance.

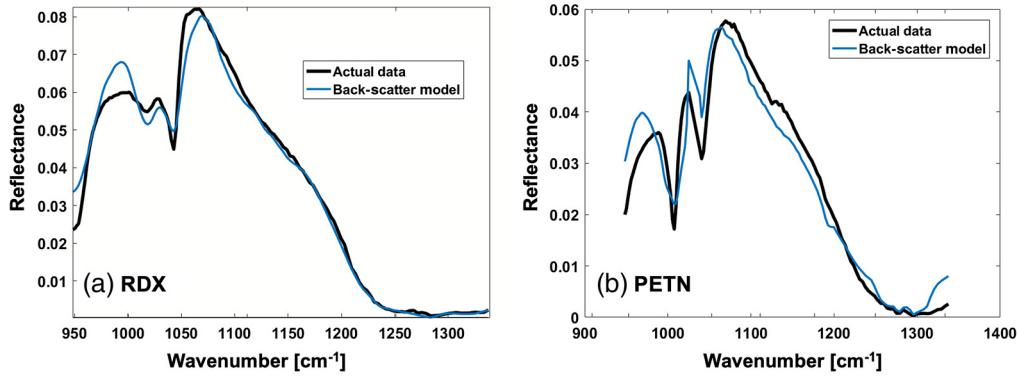


Fig. 5 The Mie scattering model (blue curve) provides strong fits to measurements (black curve) of (a) RDX and (b) PETN particles on glass.

$$FF = \frac{3m}{2\rho \sum_i D_{\text{particle},i}(m, \mu, \sigma)}, \quad (1)$$

where $D_{\text{particle},i}$ is a particle diameter with units (cm) sampled from a particle size distribution. We use a log-normal distribution, shown to be effective for modeling particle sizes^{38–40} with mean μ and standard deviation σ . Let R_{particle} be the particle reflectance based on Mie scattering

$$R_{\text{particle}}(\lambda) = S_B Q_B(\lambda) + S_{LT} Q_S(\lambda) R_{\text{sub}}(\lambda) + S_{QT} Q_S(\lambda)^2 R_{\text{sub}}(\lambda), \quad (2)$$

where λ is the wavenumber (cm^{-1}) and R_{sub} is the substrate reflectance. S_B , S_{LT} , and S_{QT} are the backscattering, linear transfection, and quadratic transfection strength parameters, respectively. Q_B and Q_S are the backward and forward scattering reflectance contributions calculated using the complex optical constants for the specific chemical. Then, the full model for a particle on a surface is defined as

$$R_P(\lambda) = R_{\text{particle}}(\lambda)FF + SF_{\text{sub}}(1 - FF)R_{\text{sub}}(\lambda), \quad (3)$$

where SF_{sub} is the substrate scale factor, which may be used as a proxy for BRDF information. The user must define the particle diameter mean, μ , standard deviation, σ , and substrate scale factor SF_{sub} .

Figure 5 shows comparisons of the Mie scattering model predictions to actual measurements of cyclotrimethylenetrinitramine (RDX) and pentaerythritol tetranitrate (PETN) particles on glass (samples prepared by the Naval Research Laboratory). These results were generated using $\mu = 12 \mu\text{m}$, $\sigma = 10 \mu\text{m}$, and $SF_{\text{sub}} = 1.0$.

2.3.2 Transfer matrix model for liquids

The TM method is a standard approach for calculating the reflection and transmission properties through a stack of uniform thin films with each layer having a known complex refractive index thickness [see Fig. 4(b)]. Recall the complex optical constant is denoted by \tilde{n} . We define the optical constants at each uniform thin film layer interface as: \tilde{n}_{air} for air, \tilde{n}_{chem} for the chemical, and \tilde{n}_{sub} for the substrate. The complex reflection coefficients at each layer interface are defined by r_1 and r_2 (for the single chemical case)^{16–18,26}

$$r_1(\lambda) = \frac{\tilde{n}_{\text{air}}^* - \tilde{n}_{\text{chem}}^*}{\tilde{n}_{\text{air}}^* + \tilde{n}_{\text{chem}}^*}, \quad (4)$$

and

$$r_2(\lambda) = \frac{\tilde{n}_{\text{chem}}^* - \tilde{n}_{\text{sub}}^*}{\tilde{n}_{\text{chem}}^* + \tilde{n}_{\text{sub}}^*}, \quad (5)$$

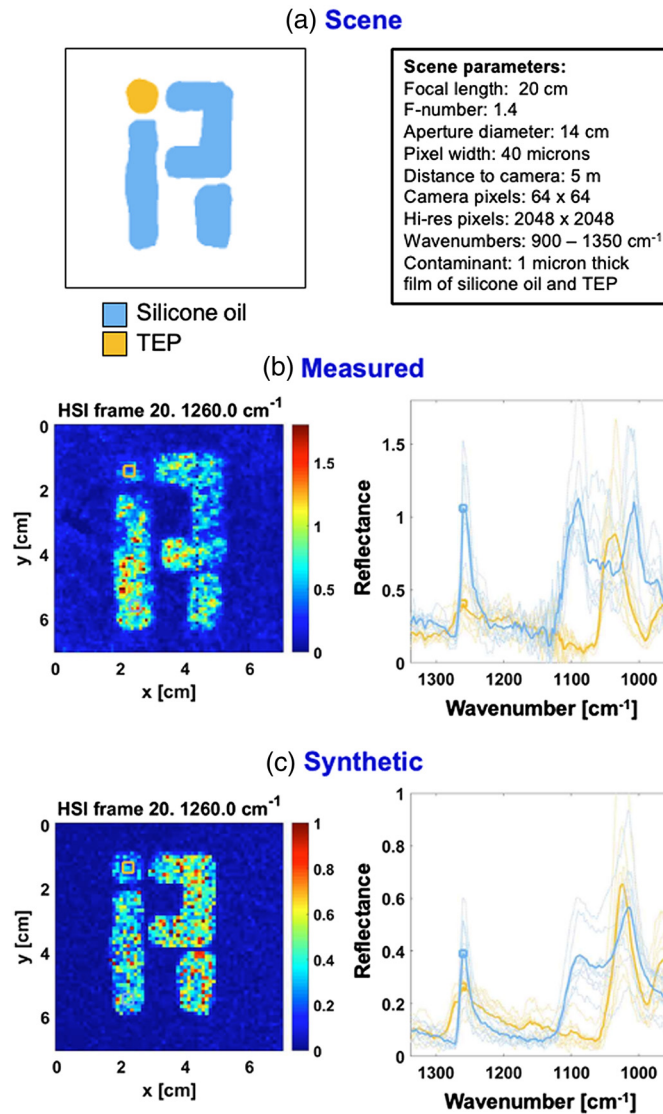


Fig. 6 The TM model accurately captures the spectral shape and features of thin films of silicone oil and TEP on HDPE. (a) A cartoon representation of the sample, (b) the measured spectra, and (c) the simulated representation.

where * indicates the complex conjugate. Let r_3 be defined as

$$r_3(\lambda) = \frac{r_1(\lambda) + r_2(\lambda) \exp(-2i\delta)}{1 + r_1(\lambda)r_2(\lambda) \exp(-2i\delta)}, \quad (6)$$

where δ is the optical depth through the chemical film.^{17,18,26} Finally, the reflectance from a uniform thin film is given as^{14,15}

$$R_F(\lambda) = r_3(\lambda)r_3(\lambda)^*. \quad (7)$$

Note that r_1 and r_2 are calculated at normal incidence. This is an approximation, as knowledge of the incidence angle is not guaranteed in standoff active spectroscopy applications.

We previously used this model as part of a hyperspectral imaging simulator. As shown in Fig. 6, the simulator was able to duplicate the main characteristics of the hyperspectral image of a sample that depicted the logo of IARPA using two different chemicals.¹⁹ In particular, the TM model effectively predicted the spectra of two chemicals, silicone oil and triethyl phosphate (TEP), on a plastic surface is shown in Fig. 6.

3 Sparse Transfer Matrix Model for Solid Film Residue

For most samples, however, we have found that neither the Mie scattering nor the TM method is sufficient to model film-like residues. Instead, we developed a model called STM to account for this case. STM assumes that only a portion of the surface is covered by the chemical, the fraction called the fill factor. The remainder is bare substrate. This is shown in Fig. 4(c). Furthermore, the film in the contaminated regions is assumed to have a nonuniform thickness. As with the Mie scattering model for particles, we assume the film thickness follows a log-normal distribution. The STM model is defined as

$$R_{\text{SF}}(\lambda) = R_F(\lambda)\text{FF} + (1 - \text{FF})\text{SF}_{\text{sub}}R_{\text{sub}}(\lambda). \quad (8)$$

Before using the STM model for detection and classification of chemical residue samples, we must set some application-dependent parameters: the particle diameter mean and standard deviation, μ and σ , respectively, and the substrate scale factor, SF_{sub} .

4 Experiments and Results

The analysis for this effort focuses on demonstrating the utility of the STM model. First, we quantitatively compare the synthetic spectra generated by each model to measured data. We include qualitative comparisons between the measured data and simulated data to demonstrate the phenomenology captured by each of the models. Finally, we observe the improvement in classification performance on measured data when using the proposed STM model over the more well-known models. The measurements used for this analysis were acquired by Kelley et al.,^{5,6} and the full simulation tool used to produce synthetic spectra with the STM model was developed by Myers et al.¹⁹ as part of the IARPA SILMARILS program.

4.1 Description of the Measured Data

Various substrate samples with chemical contaminations at a range of concentrations were prepared and provided by Johns Hopkins University Applied Physical Laboratory (JHU/APL). The solid chemicals were first dissolved in a solvent and then evenly airbrushed over the substrates using a mechanical arm. The active MIR hyperspectral reflectance measurements were collected by the system developed by Block MEMS for the IARPA SILMARILS program.^{5,6,41} In total, JHU/APL prepared six different chemicals on eight different substrates, though not all of the chemicals were used on all of the substrates. To avoid biasing the classification results for a particular chemical–substrate combination, we limit the data used for these experiments to those chemicals and substrates for which we have at least one measurement for each unique pair (three chemicals and four substrates in this case). The breakdown of measured samples per chemical, substrate, and concentration are shown in Table 1.

As shown in Table 1, there are an unequal number of measurements for each chemical–substrate class. This can lead to biased parameter tuning and results if not addressed properly. For this research, we focus on overall performance metrics. That is, fit and classification performance results are averaged within each class prior to averaging performance results across the different classes in Table 1.

Recall from Secs. 2.3.1 and 3 that the user must define several parameters before applying the Mie scattering or STM models: the particle diameter mean and standard deviation, μ and σ , respectively, and the substrate scale factor, SF_{sub} . The selected parameters should be relevant and physically realistic for the trace chemical detection application. Ideally, a range of values for each parameter should be used such that the simulations capture the full variability. Solid particles with a mean diameter of $10 \mu\text{m}$ were dissolved to produce the samples discussed. Though dissolved particles may be $<0.1 \mu\text{m}$ in diameter, the scattering from such particles is negligible in the MIR where the illumination waves are on the order of $1 \mu\text{m}$. Similarly, we only consider particle diameter standard deviations of 0.1 to $1.25 \mu\text{m}$. The substrate scale factor in the Mie scattering and STM models provides a proxy for the substrate BRDF as this information is not necessarily readily available. We consider a scale factor ranging from

Table 1 The number of measured samples and their concentrations for each unique chemical/substrate combination under consideration in this study.

Substrate/chemical	Aspirin	Pentaerythritol	Saccharin
Cardboard	14 at 50 $\mu\text{g}/\text{cm}^2$	15 at 50 $\mu\text{g}/\text{cm}^2$	2 at 50 $\mu\text{g}/\text{cm}^2$
			3 at 100 $\mu\text{g}/\text{cm}^2$
			1 at 150 $\mu\text{g}/\text{cm}^2$
Glass	1 at 100 $\mu\text{g}/\text{cm}^2$	1 at 100 $\mu\text{g}/\text{cm}^2$	6 at 100 $\mu\text{g}/\text{cm}^2$
		1 at 150 $\mu\text{g}/\text{cm}^2$	
HDPE	2 at 10 $\mu\text{g}/\text{cm}^2$	2 at 10 $\mu\text{g}/\text{cm}^2$	2 at 100 $\mu\text{g}/\text{cm}^2$
	2 at 100 $\mu\text{g}/\text{cm}^2$	5 at 100 $\mu\text{g}/\text{cm}^2$	
Rough aluminum	4 at 10 $\mu\text{g}/\text{cm}^2$	1 at 10 $\mu\text{g}/\text{cm}^2$	3 at 10 $\mu\text{g}/\text{cm}^2$
	7 at 100 $\mu\text{g}/\text{cm}^2$	5 at 100 $\mu\text{g}/\text{cm}^2$	5 at 100 $\mu\text{g}/\text{cm}^2$
	—	1 at 150 $\mu\text{g}/\text{cm}^2$	1 at 150 $\mu\text{g}/\text{cm}^2$

Table 2 Tunable model parameters and their range of values used for our experiments.

Parameter	Definition	Experiment values
μ	Mean particle diameter	0.1 to 10.0 μm
σ	Particle diameter standard deviation	0.10 to 1.26 μm
SF_{sub}	Substrate scale factor	0.1 to 10.0

0.1 to 10.0, which is the range of BRDF values measured from a clean sample of high-density polyethylene (HDPE) (measurements provided by PNNL under the IARPA SILMARILS program). These parameter ranges are summarized in Table 2. Both the simulated and real data used for this analysis consist of 200 wavenumbers from 980 to 1290 cm^{-1} with an approximate 1.56 cm^{-1} spacing. Reflectance signatures are normalized to avoid any calibration inconsistencies as well as to show the differences in the overall shape and location of spectral features, which are the discriminating features in active spectroscopy detection and classification applications.

4.2 Comparisons of Simulated and Measured Data

The plots in Fig. 7 provide qualitative comparisons of the synthetic spectra generated by the STM simulation tool (gray curves) with their corresponding measurements (black curves). The variability in the simulated spectra can be attributed to the wide range of parameter values summarized in Table 2. Of perhaps more interest to this research is the quantitative comparison of the abilities of the various signature models discussed to accurately model real measured reflectance signatures. For this comparison, we calculate the overall root mean square error (RMSE) of the outputs of the Mie scattering, TM, and STM models with their corresponding measurements.

We calculate overall RMSE while varying each of the model parameters to capture the sensitivity of the models considered. Using Eq. (1), we find that the fill factor is only <1 for mean particle diameters $>2 \mu\text{m}$. Therefore, the substrate scale factor has no effect for small particle sizes [see Eqs. (3) and (8)]. We begin the sensitivity analysis by varying the mean particle diameter, μ , within the range in Table 2. The standard deviation, σ , and substrate scale factor, SF_{sub} , are set to 0.5 μm and 1.0, respectively. The average RMSE for each of the reflectance

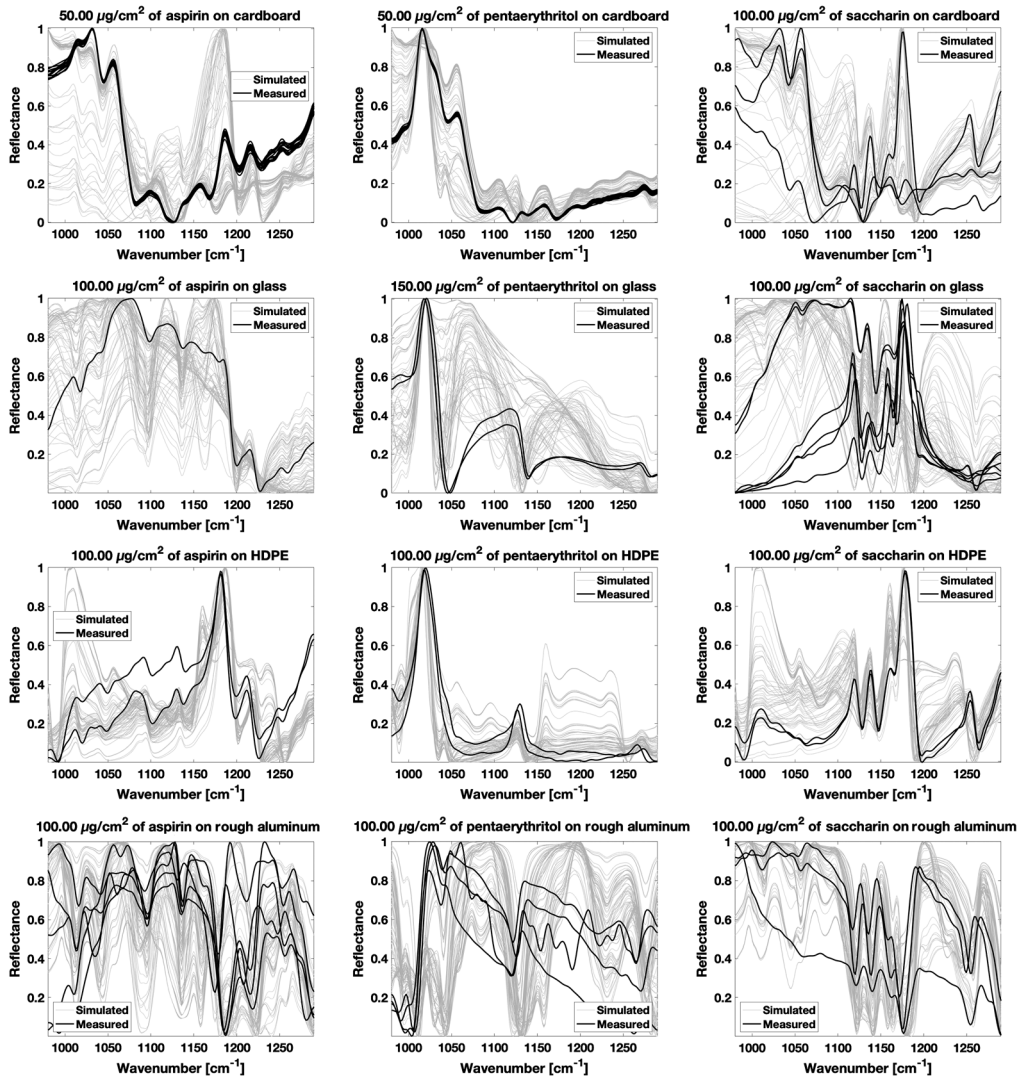


Fig. 7 Comparisons of STM-simulated spectra (gray curves) with their corresponding measurements (black curves). All data are shown in normalized reflectance units.

models is shown as a function of μ in the left-hand plot in Fig. 8. Because the TM model only varies with the input concentration, its RMSE does not vary with μ . STM outperforms the other two models in terms of overall RMSE. Both STM and Mie scattering demonstrate minimum RMSE for mean particle diameters $>2 \mu\text{m}$ (i.e., fill factor <1) indicating that the uniform thin film assumption of the TM model is less valid for residue samples.

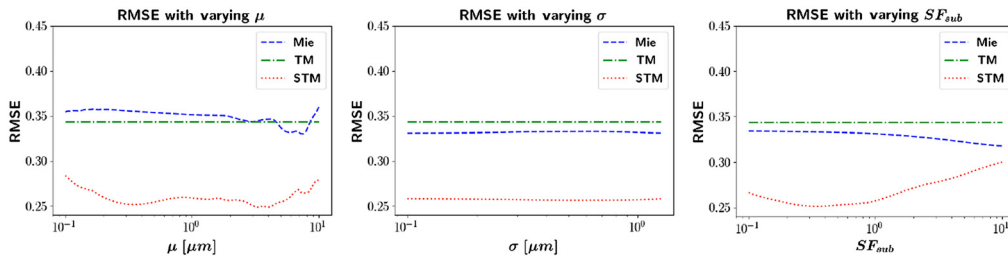


Fig. 8 Overall RMSE as a function of each of the model parameters for each of the three signature models considered. The STM model (red dotted curves) consistently outperforms the other models in terms of overall fit to the measured data.

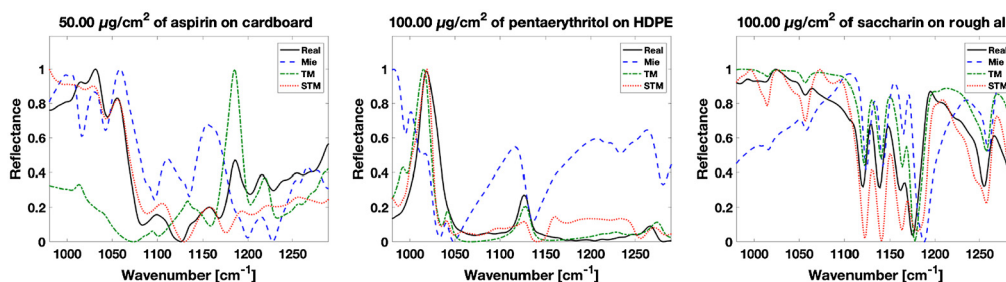


Fig. 9 Comparisons of measured data (black solid curves) with example spectra generated by the three signature models considered. The model parameters were selected to jointly minimize the overall RMSE of all models. The STM model (red dotted curves) captures more of the features and provides an overall better fit to the phenomenology of the measured data than the Mie scattering (blue dashed curves) and TM (green dashed curves).

We continue the sensitivity analysis while allowing σ to vary. For this result, μ is set to $5.46 \mu\text{m}$ to jointly minimize the RMSE for both the Mie scattering and STM models. Figure 8(b) shows that the particle size standard deviation has less effect on the RMSE than the mean particle size. Finally, we set σ to $1.14 \mu\text{m}$ to minimize the RMSE of both Mie scattering and STM and allow SF_{sub} to vary. The result is shown in Fig. 8(c). Overall, the STM model achieves an average 25% reduction in overall RMSE.

The RMSE provides a measurement of the overall fit of the simulated data to the measured data, but does not tell us how well the models capture the phenomenology of the samples. Figure 9 compares example spectra simulated by each of the models with real measurements. As with the previous results, we select model parameters that jointly minimized the RMSE for both the Mie scattering and STM models for this result: $\mu = 5.46 \mu\text{m}$, $\sigma = 1.14 \mu\text{m}$, and $SF_{\text{sub}} = 1.0$. The examples include all three chemicals on three different substrates. The Mie scattering and TM models capture some of the spectral features in each sample, but the STM models provides an overall better match to the phenomenology. Some of the differences between the STM and TM models in particular appear minor (e.g., the feature at 1025 cm^{-1} in the pentaerythritol plot). Recall that an active spectrometer has many applications, and the spectral library often contains hundreds or more chemicals. Minor differences such as this are critical for accurate classification when considering many chemicals that share the same or very similar features.

4.3 Classification Results on Real Data

Next, we test the ability of the reflectance models to improve classification results on real measurements. For these results, we use RMSE as a classification metric. We compare each measurement to the full spectral library generated by each model and select the chemical that minimizes the RMSE. The model parameters are varied in the same way as in Sec. 4.2. The overall classification accuracy as a function of each model parameter is shown for each model in Fig. 10. Again, we see that the Mie scattering and STM models perform better for

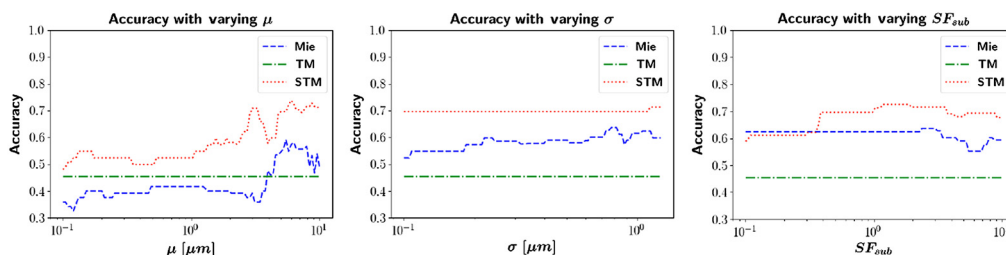


Fig. 10 Overall classification accuracy as a function of each of the model parameters for each of the three signature models considered. The STM model (red dotted curves) consistently outperforms the other models in terms of overall fit to the measured data. In particular, both the STM and Mie scattering models achieve higher accuracy for larger particle diameters (fill factor < 1), indicating that the nonuniform film assumption is valid.

larger particle sizes, suggesting that substrate effects must be considered for capturing the phenomenology of residue samples. Again, performance is averaged over each class prior to averaging across the different chemical–substrate classes. On average, STM achieves an overall classification accuracy 12% to 15% greater than TM and Mie scattering, respectively. The peak classification accuracy of the STM model is 74% as compared to the TM and Mie scattering models at 46% and 64%, respectively.

5 Summary

In this work, we present STM, an extension of the physics-based transfer matrix model. The STM model better captures the phenomenology of chemical residues on surfaces by allowing for a log-normal distribution of film thicknesses sparsely covering the surface. We compare the STM model to the well-known Mie scattering and the standard transfer matrix models. First, we quantify the overall fit of the simulated spectra to the measured data as a function of the model parameters. Our STM model reduces the overall RMSE between simulated spectra and measured spectra by about 25%. We also calculate the overall classification accuracy achieved when using each of the three models to generate the reference signature library. When the model parameters are optimized, STM outperforms the other two signature models by 10% to 28%.

Acknowledgments

The authors thank Dr. Kristin DeWitt, IARPA program manager of the SILMARILS program, for her support under contract FA8650-16-C-9107 as well as the program’s test and evaluation team for providing optical constants, BRDF measurements, and contaminated samples used for analysis. Additionally, the authors thank their colleagues from Systems & Technology Research for their provided insights. Disclosures: The authors declare no conflicts of interest. This research was funded by the Office of the Director of National Intelligence (ODNI), Intelligence Advanced Research Projects Activity (IARPA), through the AFRL contract FA8650-16-C-9107. All statements of fact, opinion, or conclusions contained herein are those of the authors and should not be construed as representing the official views or policies of IARPA, the ODNI, or the U.S. Government. The Government is authorized to reproduce and distribute reprints for Governmental purposes notwithstanding any copyright annotation thereon.

References

1. K. DeWitt, “Advances in active infrared spectroscopy for trace chemical detection,” *Proc. SPIE* **10986**, 109860J (2019).
2. M. C. Phillips and B. E. Bernacki, “Infrared spectroscopy of explosives residues: measurement techniques and spectral analysis,” in *Laser-Based Optical Detection of Explosives*, P. M. Pellegrino, E. L. Holthoff, and M. E. Farrell, Eds., pp. 213–256, CRC Press, Boca Raton, Florida (2015).
3. P. Kotidis, E. R. Deutsch, and A. K. Goyal, “Standoff detection of chemical and biological threats using miniature widely tunable QCLs,” *Proc. SPIE* **9467**, 94672S (2015).
4. A. K. Goyal and T. R. Myers, “Active mid-infrared reflectometry and hyperspectral imaging,” in *Laser-Based Optical Detection of Explosives*, P. M. Pellegrino, E. L. Holthoff, and M. E. Farrell, Eds., CRC Press, Boca Raton, Florida (2015).
5. D. B. Kelley et al., “High-speed mid-infrared hyperspectral imaging using quantum cascade lasers,” *Proc. SPIE* **10183**, 1018304 (2017).
6. D. B. Kelley et al., “High-speed and large-area scanning of surfaces for trace chemicals using wavelength-tunable quantum cascade lasers,” *Proc. SPIE* **10629**, 1062909 (2018).
7. K. DeWitt, “Machine learning for better trace chemical detection,” *Proc. SPIE* **10986**, 109861A (2019).
8. M. Phillips et al., “Challenges of infrared reflective spectroscopy of solid-phase explosives and chemicals on surfaces,” *Proc. SPIE* **8358**, 23 (2012).

9. J. Suter, B. Bernacki, and M. Phillips, "Spectral and angular dependence of mid-infrared diffuse scattering from explosives residues for standoff detection using external cavity quantum cascade lasers," *Appl. Phys. B* **108**, 965–974 (2012).
10. R. Furstenberg et al., "The challenge of changing signatures in infrared stand-off detection of trace explosives," *Proc. SPIE* **9073**, 90730M (2014).
11. R. Furstenberg et al., "On constructing surface-distributed-scatterer ensembles for analysis of deposited-explosive-particle diffuse-reflectance spectra," *Proc. SPIE* **10629**, 1062914 (2018).
12. G. Videen, "Light scattering from a sphere on or near a surface," *J. Opt. Soc. Am. A* **8**, 483–489 (1991).
13. P. J. Dobson, "Absorption and scattering of light by small particles," *Phys. Bull.* **35**, 104–104 (1984).
14. H. Macleod, *Thin-Film Optical Filters*, 4th ed., CRC Press, Boca Raton, Florida (2010).
15. C. C. Katsidis and D. I. Siapkas, "General transfer-matrix method for optical multilayer systems with coherent, partially coherent, and incoherent interference," *Appl. Opt.* **41**, 3978–3987 (2002).
16. X. Tian, C. Zhuang-Qi, and F. Jing-Huai, "The analytical transfer matrix method for quantum reflection," *Chin. Phys. B* **19**, 040307 (2010).
17. L. Landau and E. Lifshitz, *Quantum Mechanics: Non-Relativistic Theory*, 3rd ed., Elsevier Ltd., Burlington, Massachusetts (1977).
18. L. D. Landau and E. Lifshitz, *Electrodynamics of Continuous Media*, 2nd ed., Pergamon Press Inc., Elmsford, New York (1984).
19. T. Myers et al., "Mid-infrared hyperspectral simulator for laser-based detection of trace chemicals on surfaces," *Proc. SPIE* **10198**, 101980C (2017).
20. J. M. Ziman, *Principles of the Theory of Solids*, 2nd ed., Cambridge University Press, New York (1972).
21. B. M. DeVetter et al., "Optical and chemical characterization of uranium dioxide (UO₂) and uraninite mineral: calculation of the fundamental optical constants," *J. Phys. Chem. A* **122**(35), 7062–7070 (2018).
22. B. M. DeVetter et al., "Single-angle reflectance spectroscopy to determine the optical constants n and k: considerations in the far-infrared domain," *Appl. Opt.* **57**, 6587–6597 (2018).
23. T. N. Beiswenger et al., "Identification of uranium minerals in natural U-bearing rocks using infrared reflectance spectroscopy," *Appl. Spectrosc.* **72**, 209–224 (2017).
24. M. R. K. Kelly-Gorham et al., "Complex refractive index measurements for BaF₂ and CaF₂ via single-angle infrared reflectance spectroscopy," *Opt. Mater.* **72**, 743–748 (2017).
25. B. M. DeVetter et al., "Reflectance from solids and solid particles: the need for the optical constants n and k and far-IR measurement challenges," *Proc. SPIE* **10750**, 1075008 (2018).
26. O. S. Heavens, "Optical properties of thin films," *Rep. Prog. Phys.* **23**, 1–65 (1960).
27. M. L. Wenrich and P. R. Christensen, "Optical constants of minerals derived from emission spectroscopy: application to quartz," *J. Geophys. Res.: Solid Earth* **101**(B7), 15921–15931 (1996).
28. P. D. Kleiber et al., "T-matrix studies of aerosol particle shape effects on IR resonance spectral line profiles and comparison with an experiment," *J. Geophys. Res.: Atmos.* **114**(D21), D21209 (2009).
29. V. P. Tishkovets, E. V. Petrova, and M. I. Mishchenko, "Scattering of electromagnetic waves by ensembles of particles and discrete random media," *J. Quant. Spectrosc. Radiat. Transfer* **112**(13), 2095–2127 (2011).
30. B. H. Horgan et al., "Near-infrared spectra of ferrous mineral mixtures and methods for their identification in planetary surface spectra," *Icarus* **234**, 132–154 (2014).
31. L. Moroz et al., "Spectral properties of simulated impact glasses produced from Martian soil analogue JSC Mars-1," *Icarus* **202**(1), 336–353 (2009).
32. L. Kirkland, K. Herr, and P. Adams, "Infrared stealth surfaces: why TES and THEMIS may miss some substantial, mineral deposits on Mars and implications for remote sensing of planetary surfaces," *J. Geophys. Res.* **108**, 5137 (2003).

33. B. Hapke, *Theory of Reflectance and Emittance Spectroscopy*, 2nd ed., Cambridge University Press, New York (2012).
34. R. Hudson, P. Gerakines, and M. Moore, “Infrared spectra and optical constants of astronomical ices: II. Ethane and ethylene,” *Icarus* **243**, 148–157 (2014).
35. A. Politano et al., “Vibrational spectroscopy and theory of alkali metal adsorption and co-adsorption on single-crystal surfaces,” *Surf. Sci. Rep.* **68**(3), 305–389 (2013).
36. M. Van Thiel, E. D. Becker, and G. C. Pimentel, “Infrared studies of hydrogen bonding of water by the matrix isolation technique,” *J. Chem. Phys.* **27**(2), 486–490 (1957).
37. K. Buijs and G. R. Choppin, “Near-infrared studies of the structure of water. I. Pure water,” *J. Chem. Phys.* **39**(8), 2035–2041 (1963).
38. J. Vargas-Ubera, J. F. Aguilar, and D. M. Gale, “Reconstruction of particle-size distributions from light-scattering patterns using three inversion methods,” *Appl. Opt.* **46**, 124–132 (2007).
39. J. R. Frisvad, N. J. Christensen, and H. W. Jensen, “Computing the scattering properties of participating media using Lorenz–Mie theory,” *ACM Trans. Graphics* **26**, 60-es (2007).
40. A. Gogoi, A. Choudhury, and G. A. Ahmed, “Mie scattering computation of spherical particles with very large size parameters using an improved program with variable speed and accuracy,” *J. Mod. Opt.* **57**(21), 2192–2202 (2010).
41. D. Wood et al., “Mid-infrared reflection signatures for trace chemicals on surfaces,” *Proc. SPIE* **10629**, 1062915 (2018).

Cara P. Murphy is a lead engineer at Systems and Technology Research (STR) in Woburn, Massachusetts, USA. She received her BS degree from Merrimack College in North Andover, Massachusetts, USA, in 2011, and her MS degree from the Center for Imaging Science at the Rochester Institute of Technology (RIT) in Rochester, New York, USA, in 2013. She is currently a PhD student in the Center for Imaging Science at the RIT. Her research interests include physical modeling and image and signal processing with a focus on target detection and classification in multi/hyperspectral imagery.

John Kerekes is a professor in the Chester F. Carlson Center for Imaging Science at the RIT, in Rochester, New York, USA. He received his BS, MS, and PhD degrees in electrical engineering from Purdue University, West Lafayette, Indiana, USA. Before joining RIT in 2004, he was a technical staff member at MIT Lincoln Laboratory, Lexington, Massachusetts, USA. His research interests include earth remote sensing system modeling, simulation, and performance prediction for geophysical parameter retrieval applications.

Derek Wood is an R&D scientist at Block Engineering in Southborough, Massachusetts, USA, specializing in hyperspectral imaging and infrared spectroscopy. He received his BA degree from the State University of New York at Geneseo and his PhD in physics from the University of Massachusetts, Amherst. His area of focus is in stand-off chemical detection, real-time data processing, multicomponent image analysis, and physical modeling.

Anish Goyal: Biography is not available.