

Journal of
Applied Remote Sensing

RemoteSensing.SPIEDigitalLibrary.org

**Errata: Hull vector-based
incremental learning of hyperspectral
remote sensing images**

Fenghua Huang
Luming Yan

Errata: Hull vector-based incremental learning of hyperspectral remote sensing images

Fenghua Huang^{a,b,*} and Luming Yan^c

^aFuzhou University, Postdoctoral Programme of Electronic Science and Technology, Fuzhou 350116, China

^bYango College, Fuzhou 350015, China

^cFujian Normal University, College of Geographical Sciences, Fuzhou 350007, China

[DOI: [10.1117/1.JRS.9.099997](https://doi.org/10.1117/1.JRS.9.099997)]

This article [*J. Appl. Remote Sens.* **9**(1), 096022 (August 13, 2015)] contained an error in Fig. 3. Figs. 3(a) and 3(b) contained the same information. The figure has been revised as below, with different information presented in Fig. 3(b). All online versions of the article were corrected on 1 October 2015.

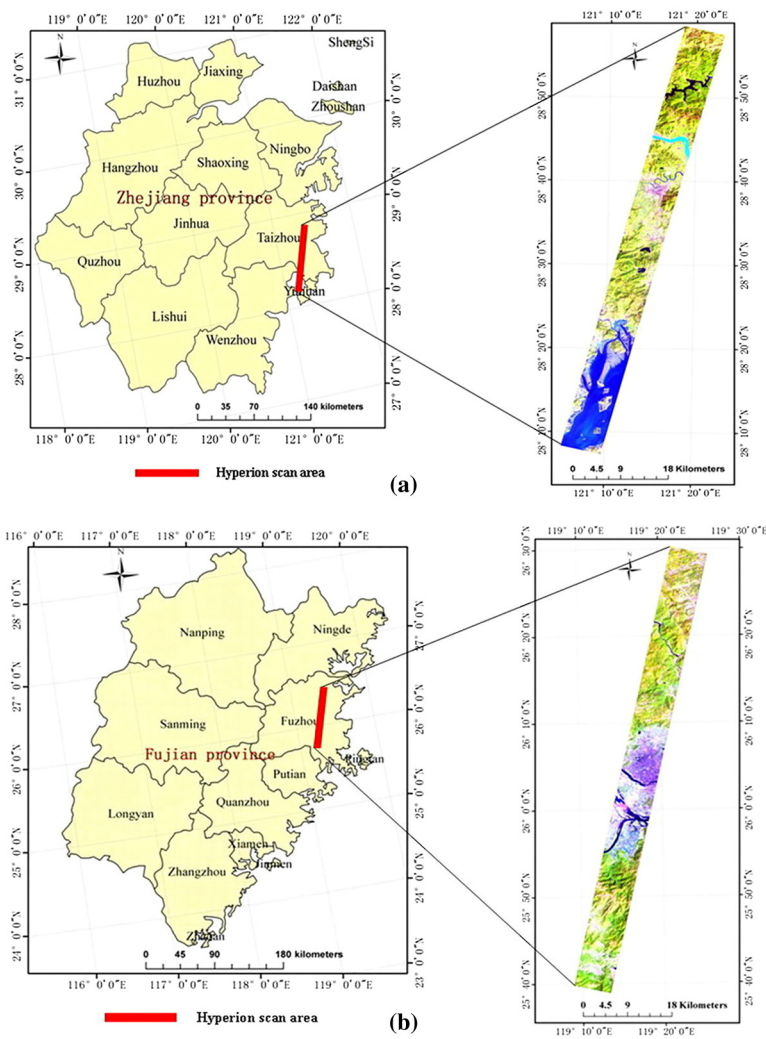


Fig. 3 Hyperion hyperspectral images of the experimental zones (RGB: 164/48/31): (a) experimental zone 1 and (b) experimental zone 2.